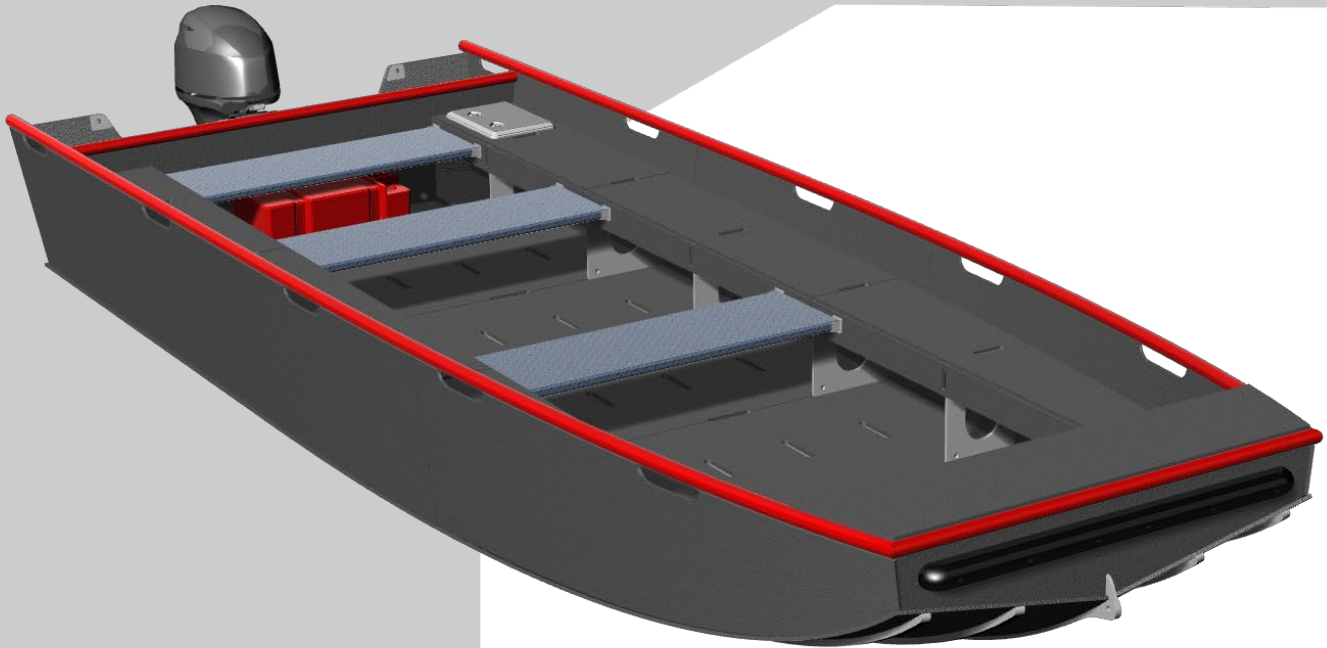




# NAVAL DESIGN

## P593 | BLACKOUT 570 Skiff



Length Overall	5.70m
Beam	2.13m
Hull Draught	0.35m
Main Propulsion	1 x 30 Bhp Outboard M
Max. Speed	25-30 knots
Fuel Capacity	25 L
Crew & PAX	1 + 5
Classification	Grey Boat Code

Introducing the new range of HDPE boats - "Blackout" - designed by KND Naval Design, the leading name in naval architecture. These boats have been specifically crafted for professional use and are set to revolutionize the industry with their impressive features. Made from High-Density Polyethylene (HDPE), the "Blackout" boats are a preferred choice for commercial applications. This material is known for its robustness, durability, and resistance to damage, making it an ideal choice for use in demanding environments. Additionally, HDPE is a low-maintenance material, meaning you can spend less time on maintenance and more time using the boat for work or recreation. One of the biggest advantages of the "Blackout" boats is that they are easy to repair. In the unlikely event of damage, you can quickly and easily repair the boat on-site, without the need for specialized tools or expertise. This means you can get back to work or play faster, without the hassle and expense of extended downtime. Not only are these boats incredibly functional and practical, but they are also environmentally friendly. HDPE is a recyclable material, meaning that at the end of the boat's life, it can be recycled and repurposed into new products, reducing waste and environmental impact.



<https://www.facebook.com/kndnavaldesign/>



<https://www.instagram.com/kndnaval/>

[www.navaldesign.co.za](http://www.navaldesign.co.za)

[info@navaldesign.co.za](mailto:info@navaldesign.co.za)