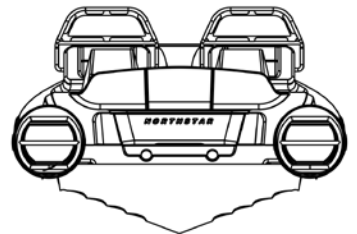
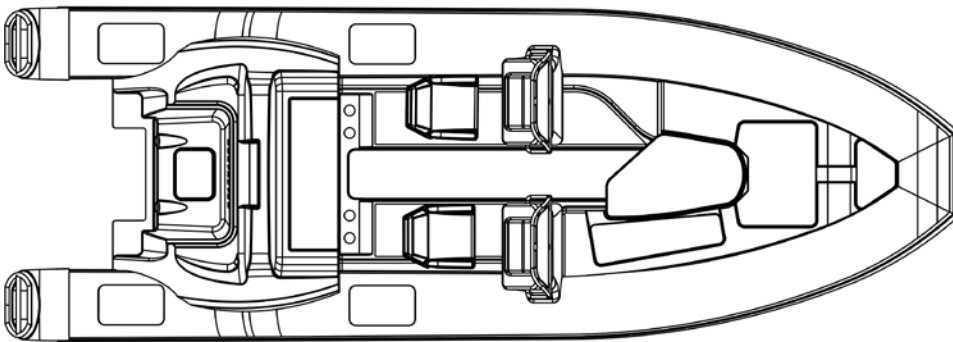
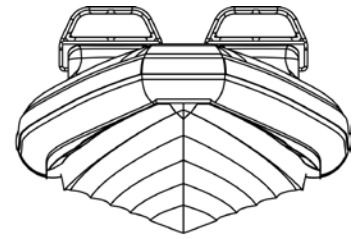
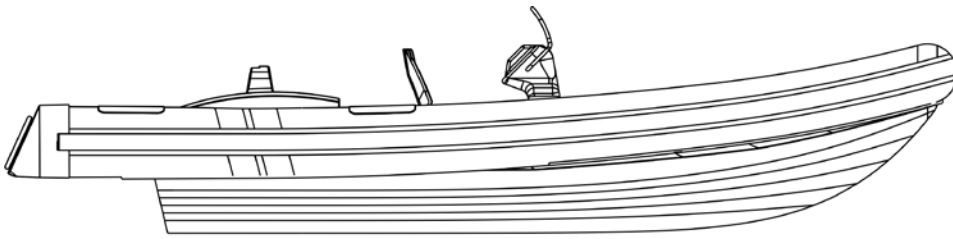


RT225 Datasheet

7.2m Leisure Rib



Naval Design



Dimensional Data

Length Overall	7200 mm
Beam	2500 mm
Speed	42 knots
Displacement	670 kg
Fuel Capacity	160 L
PAX	16
Design	KND & Madera Ribs

Engine Data

Max Power 200Hp Outboard Engine

Options And Accesories

- Anchor winch system
- 80 L holding tank

Classification

- Designed to meet class ISO/CE CAT B

Standard Features

- Full marine VHF radio
- Depth finder
- Electric and manual bilge pumps
- GPS
- Foam floatation
- Electronics distribution panel
- Steel grab-rails
- Fire extinguishers
- Adjustable table
- Interior down lights
- 16kg anchor

ADDRESS

Studio 403, Old Castle Brewery
6 Beach Road, Woodstock
Cape Town, 8000, South Africa

TELEPHONE FACSIMILE

+27 (0) 21 448 9464
+27 (0) 21 447 9468

EMAIL WEBSITE

info@navaldesign.com
www.navaldesign.com

*Please note that this is a non contractual document.
We reserve the right to make changes without notice.