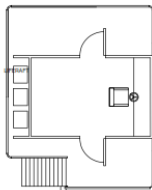
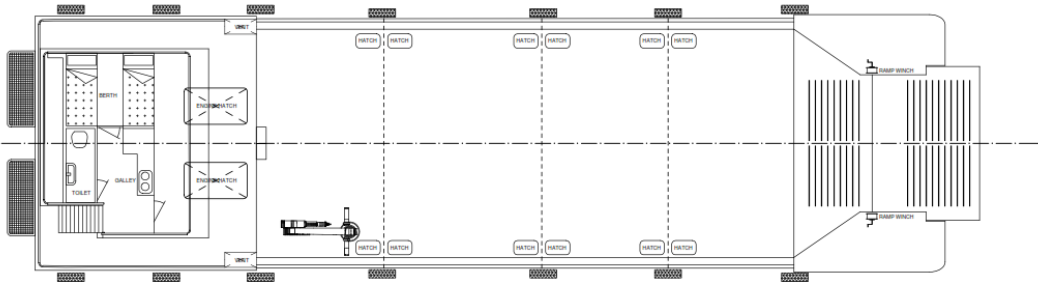
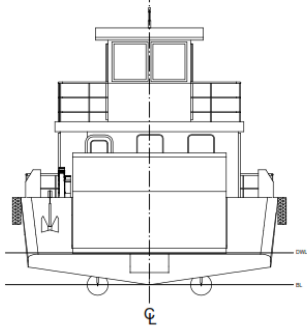
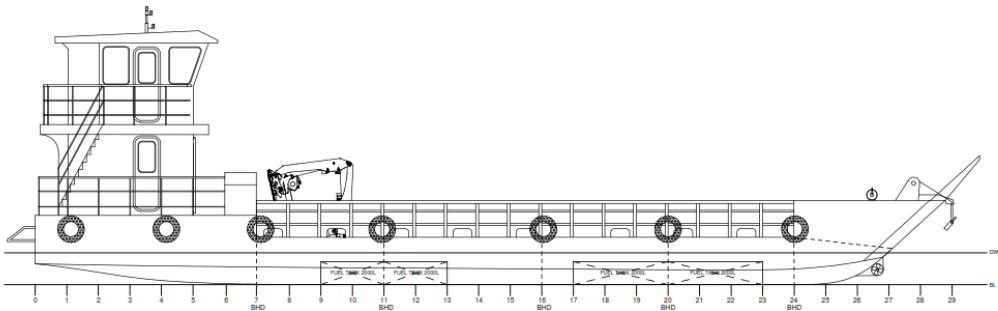




Naval Design

Datasheet

23m Landing Craft – P338



Dimensional Data

Length Overall	23 m
Beam	6.5 m
Displacement - Lightship	12000 kg
Fuel Capacity	8000 L
Draft	0.9 m
Freeboard @ amidships	1.7 m
Max passengers	20
Berths	4
WC	1

Standard Features

- Aluminium construction
- Handrails
- Bollards and mooring cleats
- Heavy duty fendering system
- Non slip deck
- Manual and electric bilge pump
- Safety equipment to meet class approval
- Navigation equipment on frame
- Anchor locker
- Bow ramp
- Mechanical winch

Engine Data

Max Power recommended

Hp	Max Speed,knt	Cruise Speed,knt	Range @ Cruise,nm	Endurance, hours

Options and Accessories

- Various seating arrangement
- Lifting point x 4
- Engine guard

Design

KND naval design

Certification

CE/ ISO

Propulsion

Outboard motors

ADDRESS

61 Shortmarket Street
Cape Town, 8000, South Africa

MOBILE TELEPHONE

+27 (0) 72 443 7444
+27 (0) 21 424 4852

EMAIL WEBSITE

kobus@navaldesign.com
www.kobusnavaldesign.com

*Please note that this is a non contractual document. We reserve the right to make changes without notice.